

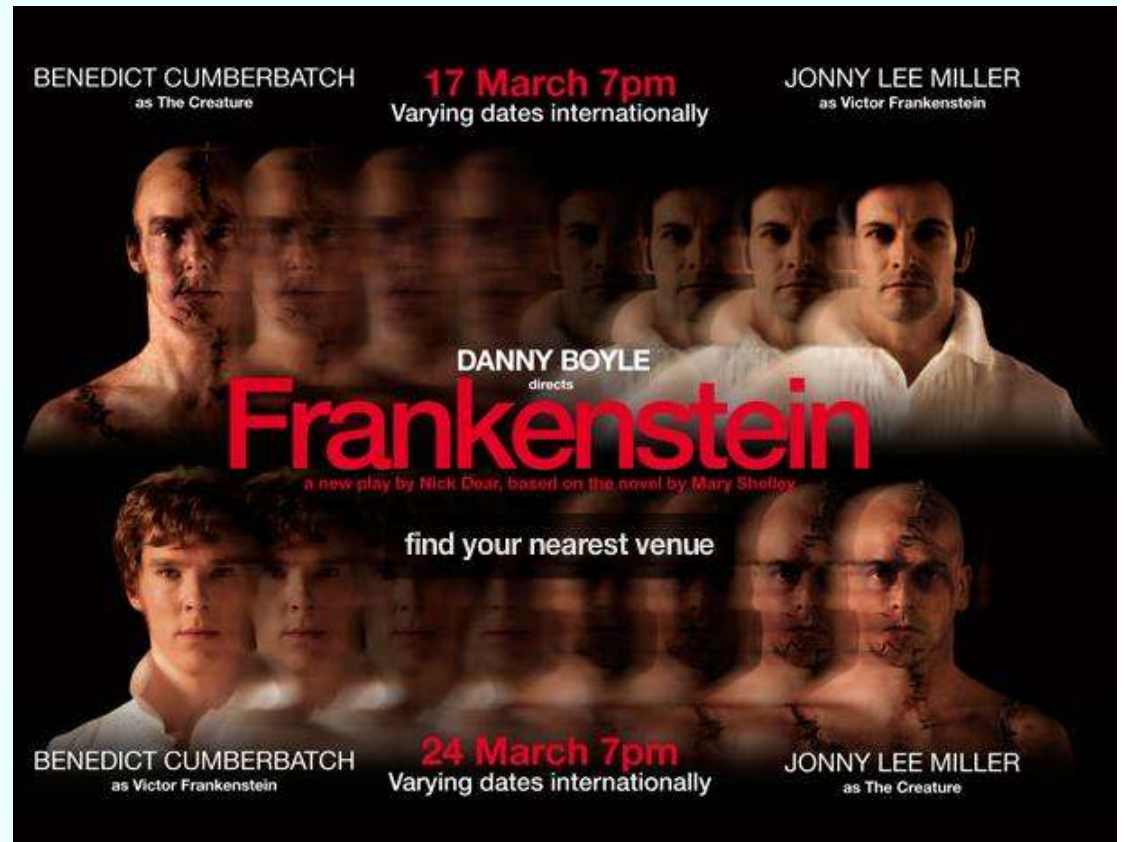
# girl walk // all day

a music video of epic proportions









A Royal Shakespeare Company Production in association with Told by an Idiot

# The Comedy of Errors

By William Shakespeare, edited by Gary Owen



## Hand in Hand:

Behind the scenes of The Comedy of Errors



Exclusive documentary about this production including interviews with the cast and creative team.

[Click here to purchase the production and documentary together.](#)



[Click here for the arabic version](#)

[اضغط هنا للنسخة العربية](#)

## Qatar

Me... You... The Human

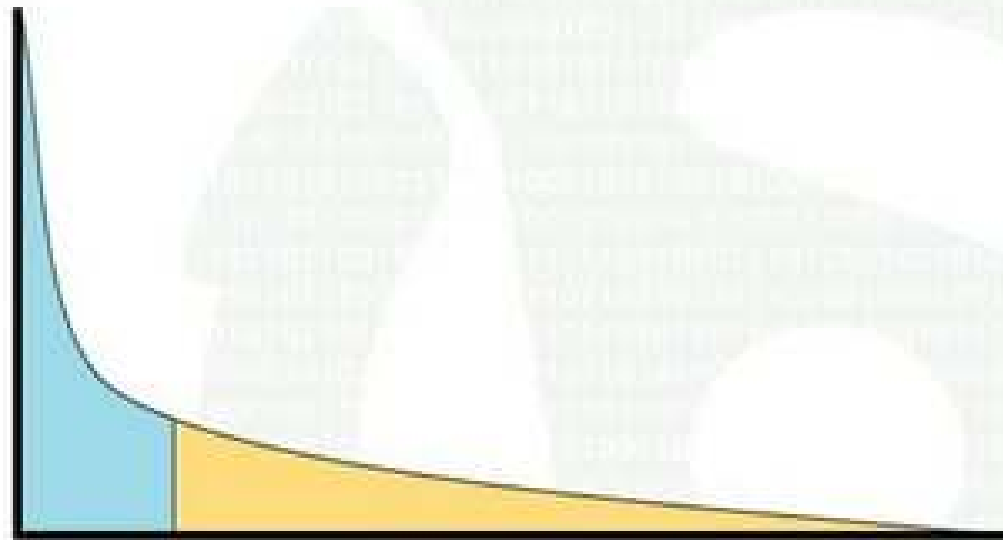


Watch the video



- [Bahrain](#)
- [Kuwait](#)
- [Oman](#)
- [Qatar](#)
- [Saudi Arabia](#)
- [United Arab Emirates](#)
- [Documentary](#)

# The Obligatory Long Tail Slide



*Enough said.*

CULTURE  
LABEL.COM




UNIVERSITY OF  
CAMBRIDGE  
Judge Business School



**GIFTS**  
Gifts, homeware & accessories,  
hand-curated from 400 partners

[VIEW NEW ARRIVALS](#)

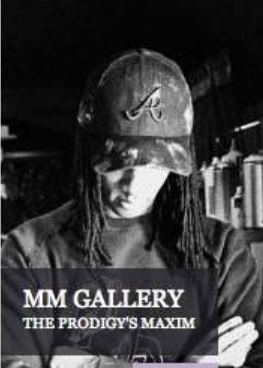


**ART**  
Affordable originals & prints  
from leading galleries

[VIEW NEW ARRIVALS](#)



**MARIA F PEPE**  
NEW JEWELLERY



**MM GALLERY**  
THE PRODIGY'S MAXIM



**SCARVES**  
AUTUMN PREPARATION



**IN JAPAN**  
BUY PRINTS



**WOLF & BADGER**  
FREE DELIVERY & 10% OFF

# girl walk // all day

a music video of epic proportions



# Girl Walk // All Day

Project by [Jacob Krupnick](#)

PROJECT HOME

UPDATES 6

BACKERS 577

COMMENTS 42



# 577

BACKERS

# \$24,817

PLEGGED OF \$4,800 GOAL

# 0

SECONDS TO GO

## FUNDING SUCCESSFUL

This project successfully raised its funding goal on March 14.

→ [Have a question about this project](#)



UNIVERSITY OF  
CAMBRIDGE  
Judge Business School

## Four barriers to successful partnerships

The **not invented here** barrier (people are unwilling to reach out to others)

The **hoarding barrier** (people are unwilling to provide help)

The **search barrier** (people are not able to find what they are looking for)

The **transfer barrier** (people are not able to work with people they do not know well)

“They may say that they want to work collaboratively - but ultimately self interest and vested interest prevail.”



Blue Sky Day – Public Art event in Trafalgar Square – sponsored by Expedia

Play Card

Round  
1/7

Score  
0

*Auguste Rodin*

Auguste Rodin

The Kiss



Exhilaration: 7

Menace: 2

Absurdity: 3

Trumps is...  
Exhilaration

Round  
2/7

Score  
14

DAVID BOMBERG

Study for 'Sappers at Work: A Canadian...



P1 Agility: 7

FRANCIS PICABIA

Portrait of a Doctor



P2 Agility: 4

DAVID SHRIGLEY

Untitled



P3 Agility: 3

Trumps is...  
Agility

Next

ARCADE FIRE

WE USED TO WAIT  
DOWNTOWN

An interactive film by Chris Milk  
Featuring "We Used To Wait"  
Built in HTML5

Enter the address of the home where you grew up

SEARCH

[?]



beyond  
participation?



A HISTORIC CINEMATIC EXPERIMENT

RIDLEY SCOTT AND KEVIN MACDONALD

TOGETHER WITH THE YOUTUBE COMMUNITY

SUNDANCE  
INSTITUTE

You Tube™

# LIFE IN A DAY

On July 24 help document  
a single day on earth

MADE POSSIBLE BY

 **LG**  
Life's Good

0 09 31 11  
DAYS HRS MINS SEC





1 “Good collaboration amplifies strength but poor collaboration is worse than no collaboration at all.”

Morten Hansen, *Collaboration*

2 Good collaboration requires competencies, qualities and attributes (CQAs) that are not commonly observed in many executive leaders

3 Knowing how to evaluate opportunities for collaboration, spot the barriers to collaboration and tailor collaboration solutions are prerequisites for building the capacity for resilience.

■ Cultural Institutions Value Chain (NESTA)

